

Next Generation biological for phosphorus use efficiency

OVERVIEW

BiOHP® is a microbial inoculant containing bioactives of PGPR – Plant Growth Promoting Rhizobacteria – that increases the availability of phosphorus and uptake of other key nutrients. It is formulated to be blended with liquid fertilizer or tank-mixed and applied in-furrow, sidedress or topdress.

FEATURES & BENEFITS

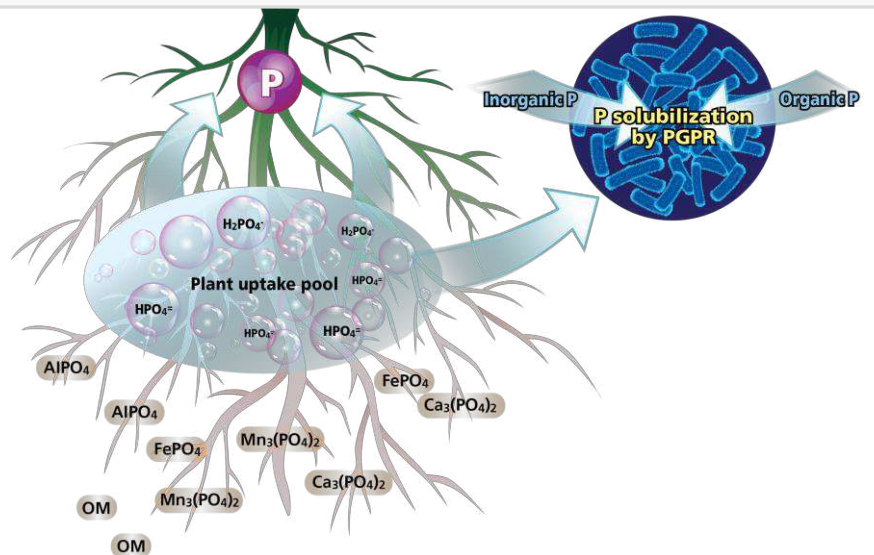
Benefits of Using BiOHP® in Crop Production:

- Increased bio-available Phosphorus level in the soil and improved nutrient uptake
- Enhanced plant growth and vigor
- Ease of application – tank-mix compatible with crop protectants and nutrient solutions
- Improved ROI from fertilizer inputs
- Optimized yield potential

TECHNOLOGY AT WORK

How BiOHP® Technology Works:

1. The bioactives in BiOHP – *Bacillus tequilensis* and *Bacillus velezensis* – produce organic acids and enzymes that transform insoluble P to soluble forms that are plant accessible.
2. Increases in bioavailable phosphorus can provide expanded root volume, improving nutrient uptake.
3. This ultimately enables optimal plant growth and increased yield potential.





Product Profile

| | |
|---|--|
| Mode of Action | <ul style="list-style-type: none"> Phosphorus solubilization and availability of other key nutrients. Plant growth promotion – improved root and shoot growth for increased nutrient uptake. |
| Fertilizer Compatibility | <ul style="list-style-type: none"> Effective with a wide range of fertility solutions to include UAN, starter fertilizers and blends. Contact a Pathway representative for a complete list of compatible fertilizers. |
| Active Ingredients – Proprietary PGPR strains | <ul style="list-style-type: none"> <i>Bacillus tequilensis</i> (5×10^7 cfu/mL) <i>Bacillus velezensis</i> (5×10^7 cfu/mL) |
| Formulation | <ul style="list-style-type: none"> Water based |
| Packaging | <ul style="list-style-type: none"> 2 x 2.5 gal case, 275 gal tote |
| Shelf life | <ul style="list-style-type: none"> 24 months from date of manufacture |

Stand Alone Application

| | |
|-----------------------|------------------|
| Starter | 16 to 32 oz/acre |
| Sidedress or Topdress | 16 to 32 oz/acre |

Ingredient Solution

| | |
|-----------------|----------------|
| UAN @ 20 GPA | 0.5% by volume |
| UAN @ 10 GPA | 1% by volume |
| Starter @ 5 GPA | 2% by volume |
| Starter @ 3 GPA | 3.5% by volume |